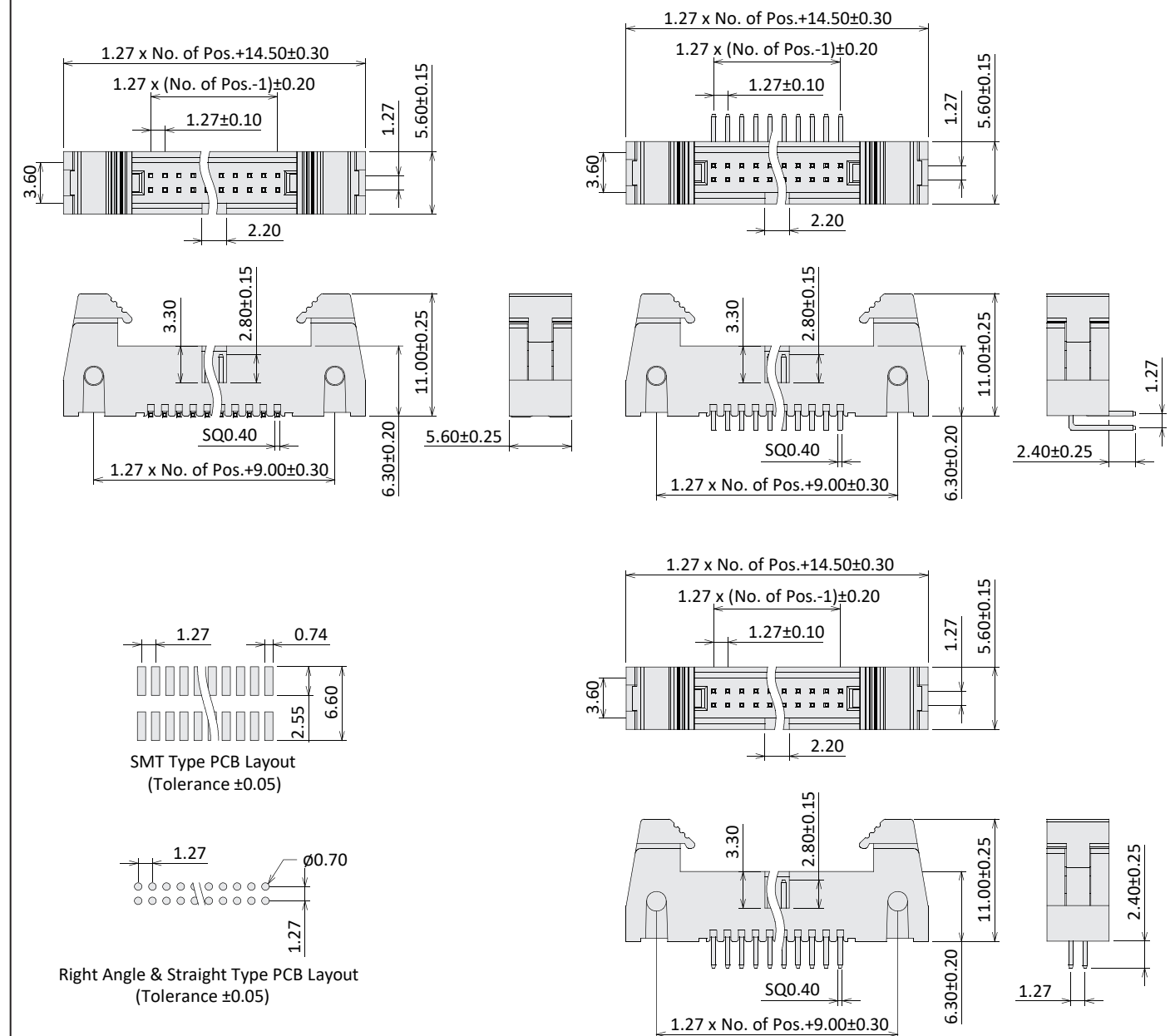


Ejector Header

Current Rate: 1A
 Dielectric Voltage: 500V AC for one minute
 Insulation Resistance: 1000MΩ Min.
 Contact Resistance: 20mΩ Max.
 Material Contact: Copper Alloy, Gold Plated
 Material Insulator: Nylon 6T, UL94V-0
 Operating Temperature: -40°C~+105°C



Ejector Header SMT / Right Angle / Straight Type 1.27mm Pitch



Order Information

G **X** **12** **XX** **2** - **XX**

M: SMT
 R: Right Angle
 L: Straight

1.27mm Pitch

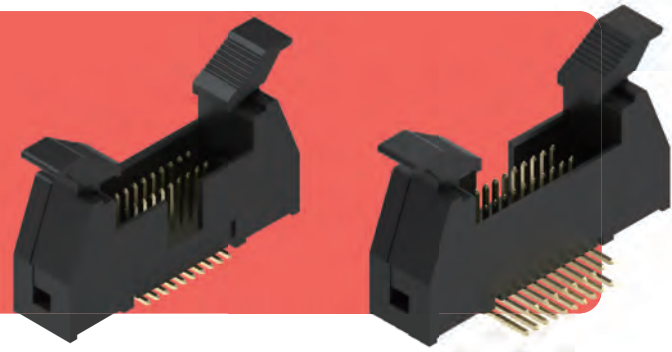
G0: Gold Flash
 S0: Gold / Tin

2: RoHS + NY 6T

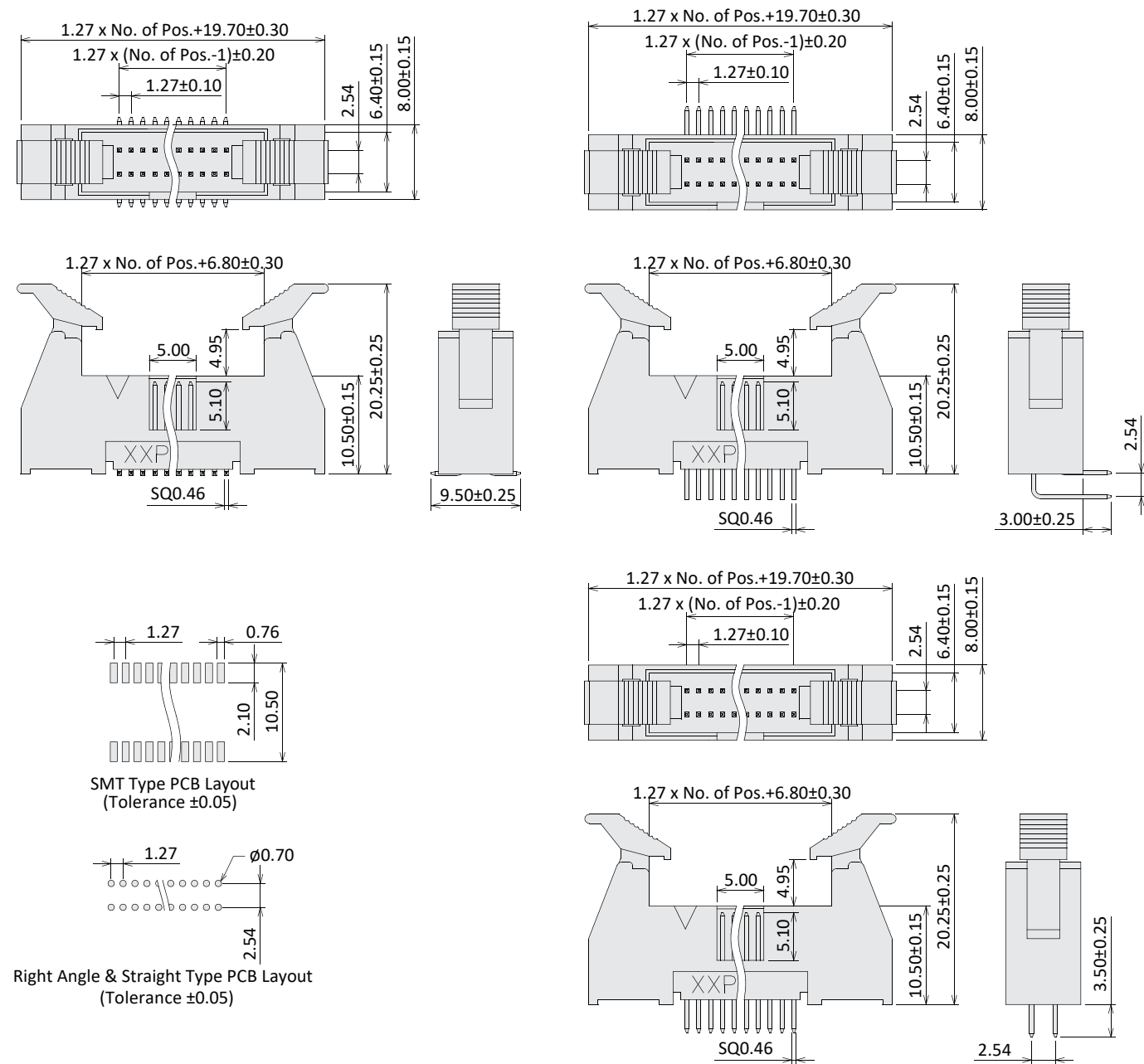
No. of Contacts (06~68)

Ejector Header

Current Rate: 1A
 Dielectric Voltage: 500V AC for one minute
 Insulation Resistance: 1000MΩ Min.
 Contact Resistance: 20mΩ Max.
 Material Contact: Copper Alloy, Gold Plated
 Material Insulator: Nylon 6T, UL94V-0
 Operating Temperature: -40°C~+105°C



Ejector Header SMT / Right Angle / Straight Type 1.27x2.54mm Pitch



Order Information

G **X** **21** **XX** **2** - **XX**

M: SMT
 R: Right Angle
 L: Straight

1.27x2.54mm Pitch

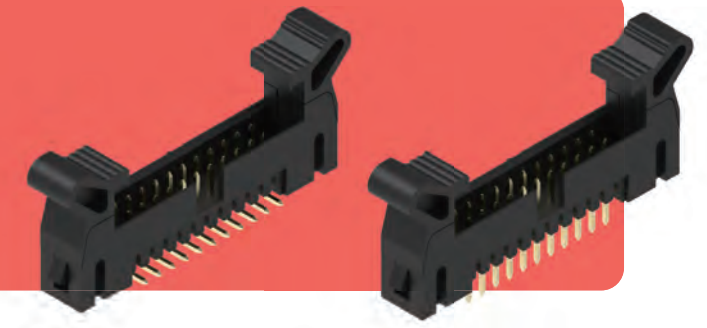
G0: Gold Flash
 S0: Gold / Tin

2: RoHS + NY 6T

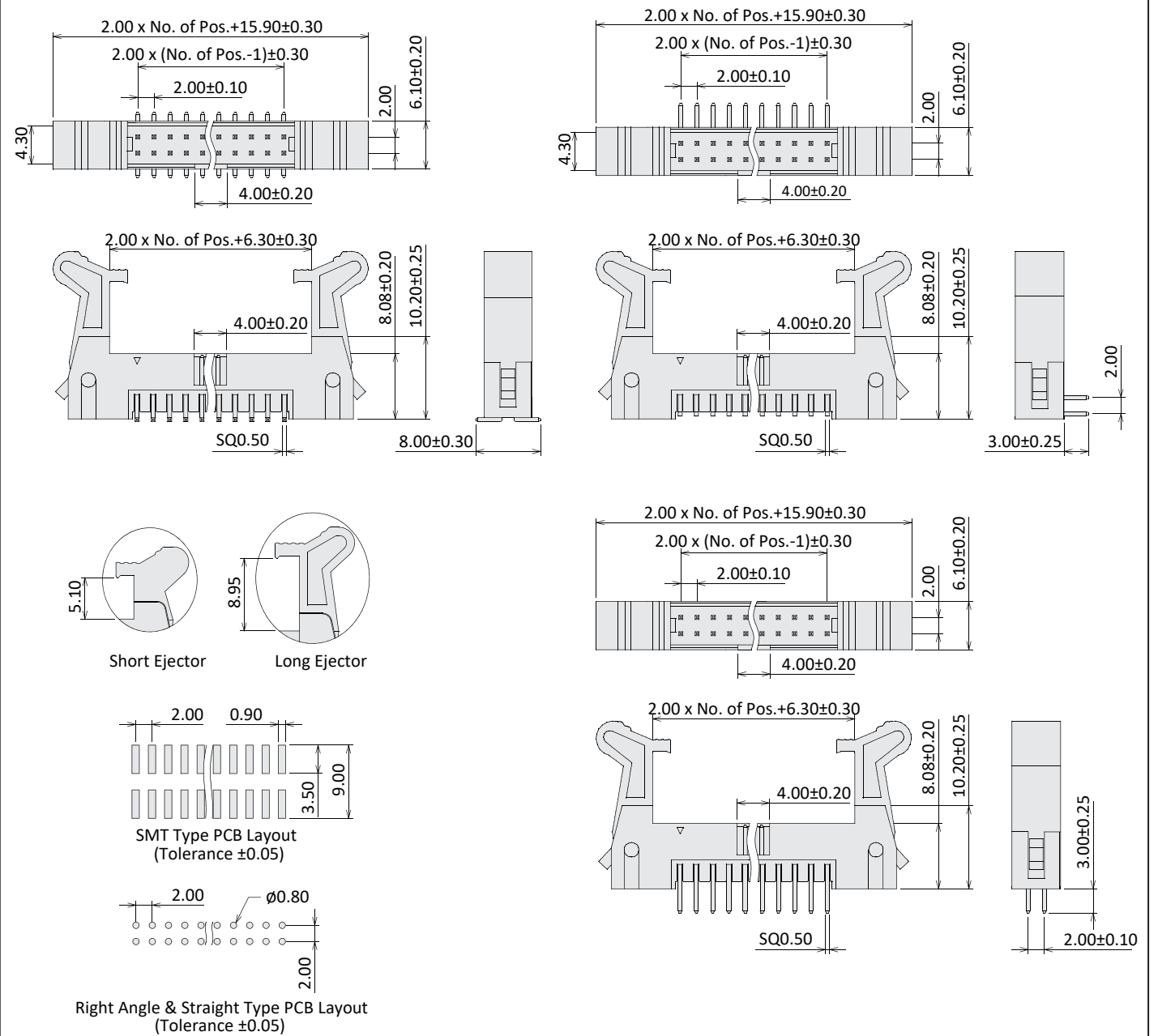
No. of Contacts (20~100)

Ejector Header

Current Rate: 2A
 Dielectric Voltage: 500V AC for one minute
 Insulation Resistance: 1000MΩ Min.
 Contact Resistance: 20mΩ Max.
 Material Contact: Copper Alloy, Gold Plated
 Material Insulator: Nylon 6T, UL94V-0
 Operating Temperature: -40°C~+105°C



Ejector Header SMT / Right Angle / Straight Type 2.00mm Pitch



Order Information

GA **X** **20** **XX** **2** - **XX** **X**

M: SMT
 R: Right Angle
 L: Straight

2.00mm Pitch

G0: Gold Flash
 S0: Gold / Tin

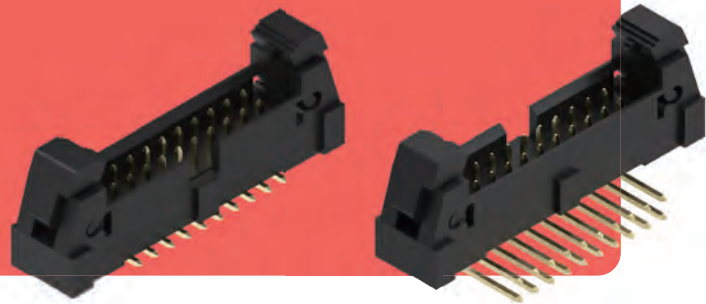
2: RoHS + NY 6T

No. of Contacts (10~64)

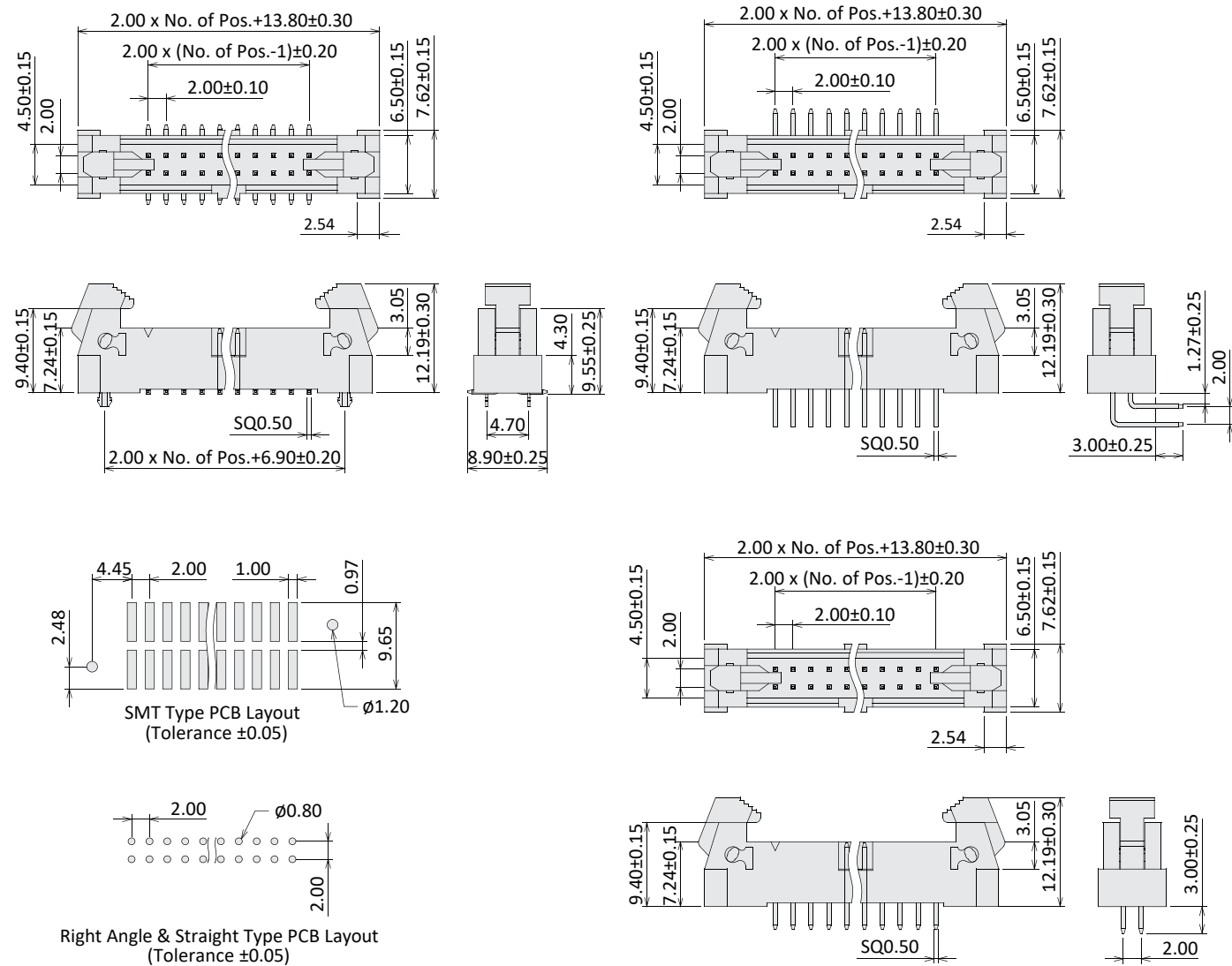
L: Long Ejector
 S: Short Ejector

Ejector Header

Current Rate: 2A
 Dielectric Voltage: 500V AC for one minute
 Insulation Resistance: 1000MΩ Min.
 Contact Resistance: 20mΩ Max.
 Material Contact: Copper Alloy, Gold Plated
 Material Insulator: LCP, UL94V-0
 Operating Temperature: -40°C~+105°C



Ejector Header SMT / Right Angle / Straight Type 2.00mm Pitch



Order Information

GA X 20 XX 4 - XX

M: SMT
 R: Right Angle
 L: Straight

2.00mm Pitch

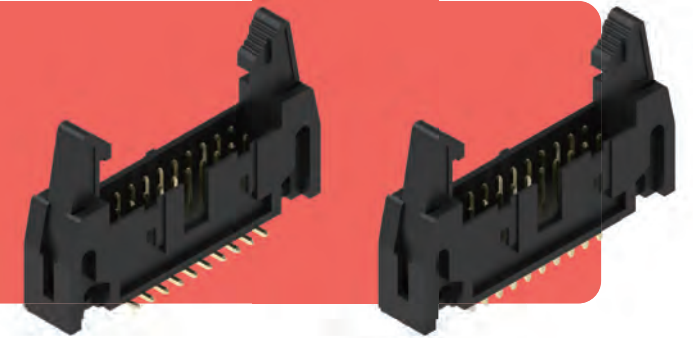
GO: Gold Flash
 SO: Gold / Tin

4: RoHS + LCP

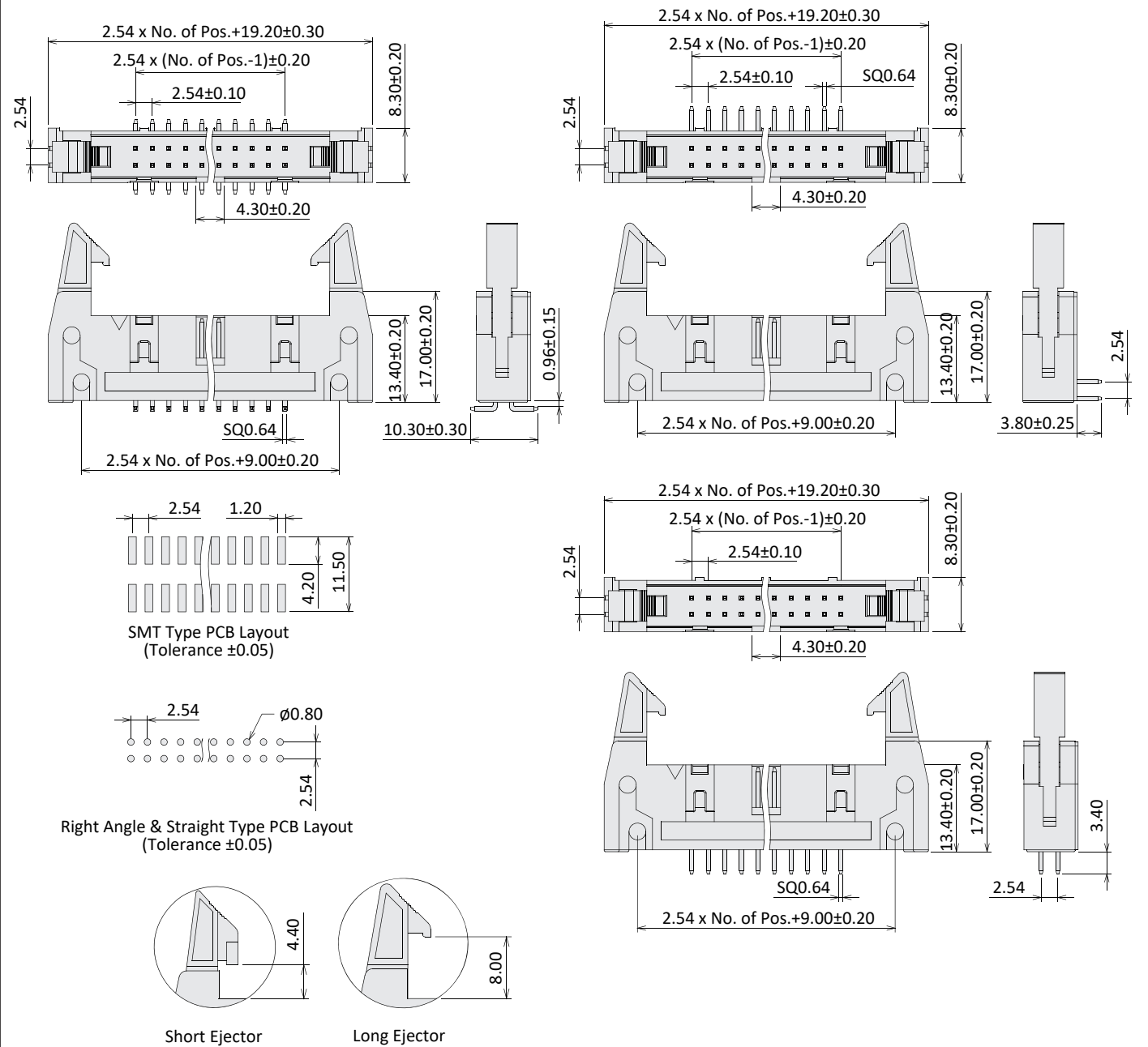
No. of Contacts (06~64)

Ejector Header

Current Rate: 3A
 Dielectric Voltage: 500V AC for one minute
 Insulation Resistance: 1000MΩ Min.
 Contact Resistance: 20mΩ Max.
 Material Contact: Copper Alloy, Gold Plated
 Material Insulator: PBT or NY 6T, UL94V-0
 Operating Temperature: -40°C~+105°C



Ejector Header SMT / Right Angle / Straight Type 2.54mm Pitch



Order Information

G X 25 XX X - XX X

M: SMT
 R: Right Angle
 L: Straight

2.54mm Pitch

GO: Gold Flash
 SO: Gold / Tin

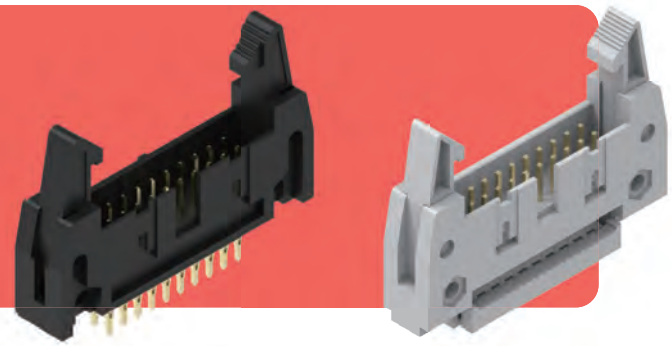
1: RoHS + PBT
 2: RoHS + NY 6T (NY 6T for SMT)

No. of Contacts (10~64)

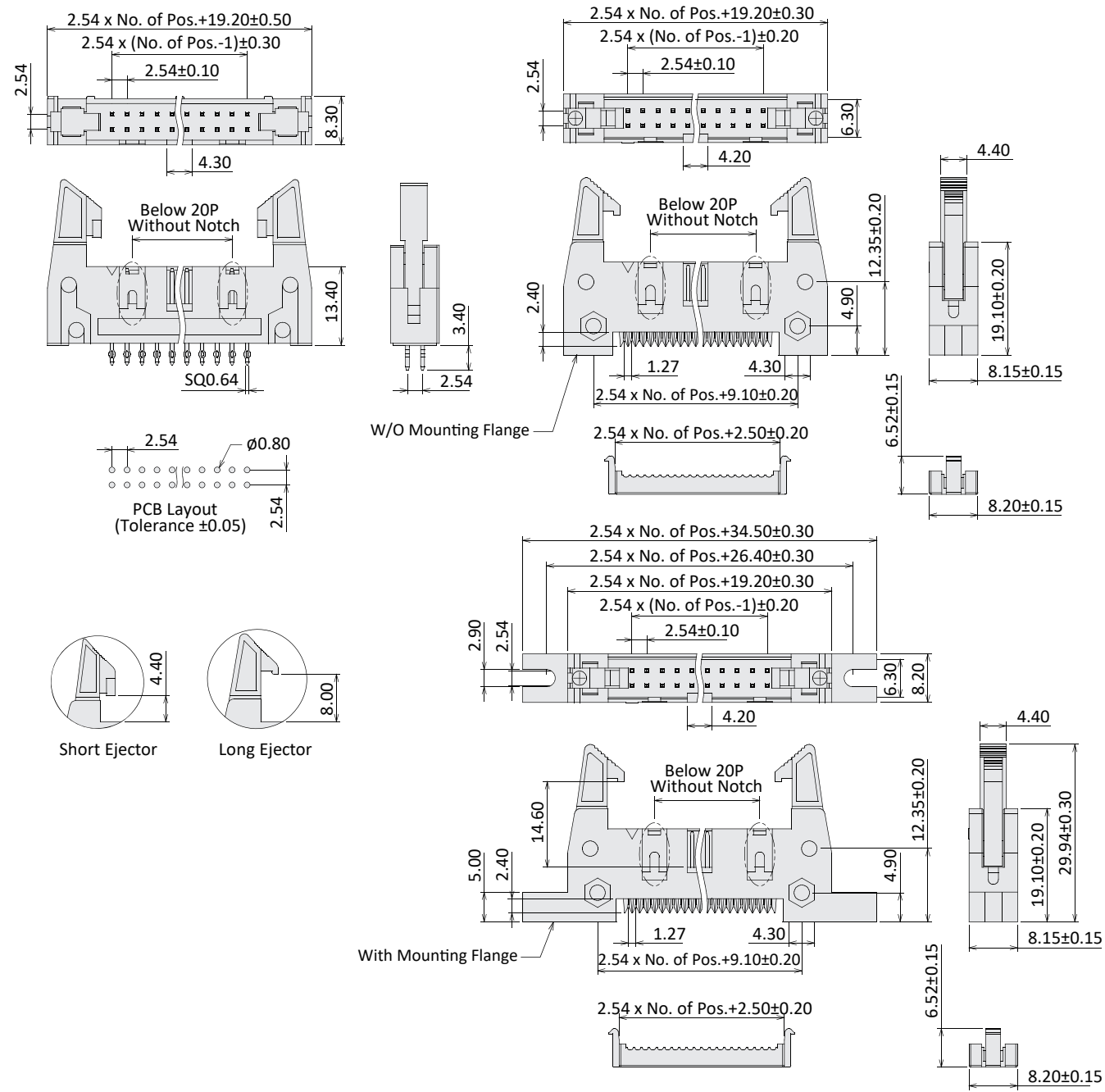
L: Long Ejector
 S: Short Ejector

Ejector Header

Current Rate: 3A
 Dielectric Voltage: 500V AC for one minute
 Insulation Resistance: 1000MΩ Min.
 Contact Resistance: 20mΩ Max.
 Material Contact: Copper Alloy, Gold Plated
 Material Insulator: PBT, UL94V-0
 Operating Temperature: -40°C~+105°C



Ejector Header Press Fit / IDC Type 2.54mm Pitch



Order Information

G **X** **25** **XX** **1** - **XX** **X** **X**

FL: Press Fit
I: IDC

2.54mm Pitch

GO: Gold Flash
SO: Gold / Tin

1: RoHS + PBT

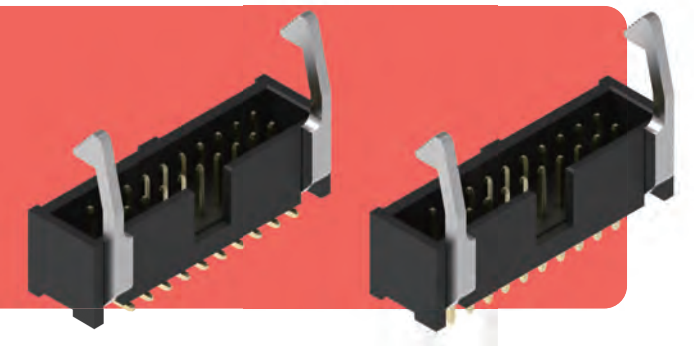
No. of Contacts (10~64)

L: Long Ejector
S: Short Ejector

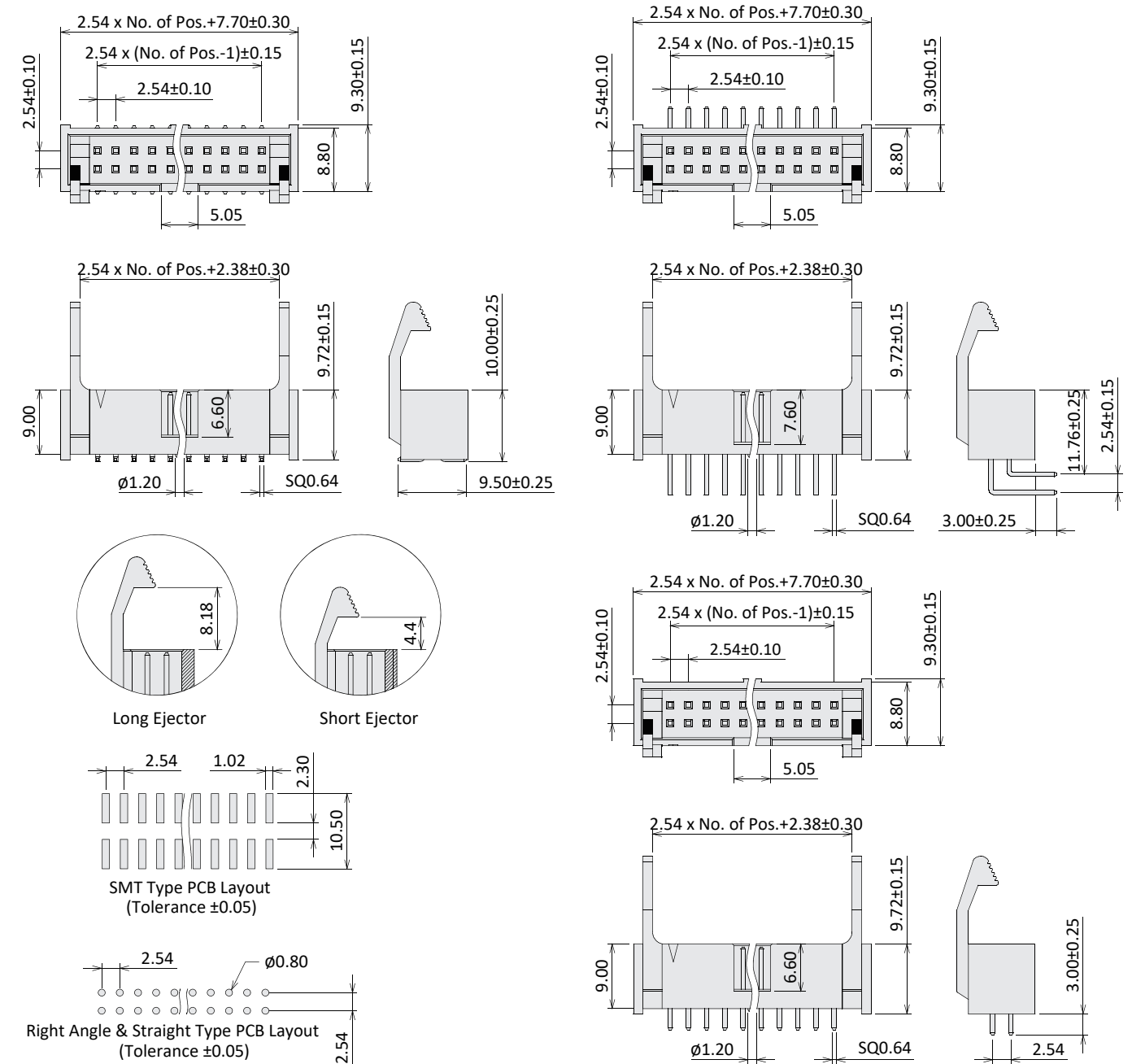
A: W/O Mounting Flange
B: With Mounting Flange (For IDC Type)

Ejector Header

Current Rate: 3A
 Dielectric Voltage: 500V AC for one minute
 Insulation Resistance: 1000MΩ Min.
 Contact Resistance: 20mΩ Max.
 Material Contact: Copper Alloy, Gold Plated
 Material Insulator: PBT, UL94V-0
 Operating Temperature: -40°C~+105°C



Ejector Header SMT / Right Angle / Straight Type 2.54mm Pitch



Order Information

GT **X** **25** **XX** **X** - **XX** **X**

M: SMT
R: Right Angle
L: Straight

2.54mm Pitch

GO: Gold Flash
SO: Gold / Tin

1: RoHS + PBT
2: RoHS + NY 6T (NY 6T for SMT)

No. of Contacts (06~64)

L: Long Ejector
S: Short Ejector